

PALLISER®

# Your partner in business, comfort and quality.

Seats that stay plush, designs that are timeless  
and materials that let life happen.





## CUSTOMIZATION IS KEY

Our upholstery is custom made-to-order.

With over 100 fabrics and 100 leathers to choose from in a variety of colours, textures and grades, your customers can design the ideal piece for their home's esthetic and lifestyle.

## LEATHER EXPERTS

Palliser maintains a corporate leather lab staffed by experts with extensive tannery experience. We test for light fastness, tear strength, colour and thickness.

We use quality covers, including natural full grain and corrected leathers, sourced from many regions including: Italy, South America and Mexico.





STANDARD  
PREMIUM FOAM



MANUAL  
ADJUSTABLE  
HEADREST



MANUAL LEVER



OTTOMAN  
INCLUDED

#### LEG

This item comes standard with the leg pictured

#### FRAME

Constructed with cold cured foam material that encases a tubular steel frame, enabling perfect ergonomic design for complete body support.

#### SEATING COMFORT

**Back Suspension:** Sinuous springs to provide premium comfort and support.  
**Seat Suspension:** Heavy gauge sinuous springs, engineered to provide premium comfort and endurance.

#### FUNCTION

Tension knob controls the rate of recline or locks in the ideal position  
Manual recline with discreet inside handle

#### COVERS

Leather  
Fabric

Q03 50003

PALLISER®



**02 Chair & Ottoman**

30 x 34 x 41"

75 x 86 x 103 cm

IA: 20" / 50 cm

**DIMENSIONS**

Seat Depth: 20" / 51 cm

Seat Height: 18" / 47 cm

Arm Depth: 25" / 63 cm

Arm Height: 24" / 60 cm

Reclined Depth: 42" / 106 cm

Dimensions shown as Width x Depth x Height.

Dimensions are correct at the time of printing and are subject to change without notice. Actual measurements for each item may vary from what is shown here. Please allow up to a +/- 1 inch difference. Availability may vary by region.

Q04 50004

PALLISER®



STANDARD  
PREMIUM FOAM



MANUAL  
ADJUSTABLE  
HEADREST



MANUAL LEVER



OTTOMAN  
INCLUDED

#### LEG

This item comes standard with the leg pictured

#### FRAME

Constructed with cold cured foam material that encases a tubular steel frame, enabling perfect ergonomic design for complete body support.

#### SEATING COMFORT

Back Suspension: Sinuous springs to provide premium comfort and support.

Seat Suspension: Heavy gauge sinuous springs, engineered to provide premium comfort and endurance.

#### FUNCTION

Tension knob controls the rate of recline or locks in the ideal position  
Manual recline with discreet inside handle

#### COVERS

Leather  
Fabric

Measurements displayed here represent the standard for this series. Some pieces may vary. Options and Add-ons may have an upcharge.

Q04 50004

PALLISER®



**02 Chair & Ottoman**

30 x 34 x 41"

75 x 86 x 105 cm

IA: 19" / 49 cm

#### DIMENSIONS

Seat Depth: 20" / 50 cm

Seat Height: 19" / 48 cm

Arm Depth: 23" / 59 cm

Arm Height: 24" / 60 cm

Reclined Depth: 43" / 108 cm

Dimensions shown as Width x Depth x Height.

Dimensions are correct at the time of printing and are subject to change without notice. Actual measurements for each item may vary from what is shown here. Please allow up to a +/- 1 inch difference. Availability may vary by region.



STANDARD  
PREMIUM FOAM



OTTOMAN  
INCLUDED



MANUAL LEVER



BRUSHED  
ALUMINUM BASE

### LEG

This item comes standard with the leg pictured

### FRAME

Constructed with cold cured foam material that encases a tubular steel frame, enabling perfect ergonomic design for complete body support.

### SEATING COMFORT

Back Suspension: Sinuous springs to provide premium comfort and support.

Seat Suspension: Heavy gauge sinuous springs, engineered to provide premium comfort and endurance.

### FUNCTION

Tension knob controls the rate of recline or locks in the ideal position

### COVERS

Leather  
Fabric



Q05 50005

PALLISER®



**02 Chair & Ottoman**

30 x 33 x 40"

75 x 84 x 102 cm

IA: 20" / 50 cm

**DIMENSIONS**

Seat Depth: 21" / 52 cm

Seat Height: 19" / 48 cm

Arm Depth: 24" / 62 cm

Arm Height: 24" / 60 cm

Reclined Depth: 41" / 103 cm

Dimensions shown as Width x Depth x Height.

Dimensions are correct at the time of printing and are subject to change without notice. Actual measurements for each item may vary from what is shown here. Please allow up to a +/- 1 inch difference. Availability may vary by region.



COLD MOLDED  
FOAM



WALNUT WOOD  
PEDESTAL  
OPTION



BRUSHED  
ALUMINUM  
PRONG BASE  
OPTION



OTTOMAN  
INCLUDED

**LEG**

Aluminum Brushed Metal Leg  
Aluminum Black Leg  
Wood Base

**FRAME**

Constructed with cold cured foam material that encases a tubular steel frame, enabling perfect ergonomic design for complete body support.

**SEATING COMFORT**

Back Suspension: 100% premium elastic webbing to provide consistent comfort and support.  
Seat Suspension: Heavy gauge sinuous springs, engineered to provide premium comfort and endurance.  
Cold molded foam seat cushions are ergonomically molded, holding their shape for the entire life of the foam  
Cold molded foam back cushions are ergonomically molded, holding their shape for the entire life of the foam

**FUNCTION**

Tension knob controls the rate of recline or locks in the ideal position

**COVERS**

Fabric  
Leather

Q14 50014

PALLISER®



**02 Chair & Ottoman**

29 x 33 x 43"

73 x 84 x 110 cm

IA: 21" / 54 cm

**DIMENSIONS**

Seat Depth: 21" / 53 cm

Seat Height: 18" / 46 cm

Arm Depth: 19" / 50 cm

Arm Height: 22" / 57 cm

Reclined Depth: 48" / 122 cm

Dimensions shown as Width x Depth x Height.

Dimensions are correct at the time of printing and are subject to change without notice. Actual measurements for each item may vary from what is shown here. Please allow up to a +/- 1 inch difference. Availability may vary by region.



COLD MOLDED FOAM



BLACK METAL BASE OPTION



CONCEALED FOOTREST



POWER BUTTON

Note: Power recline controls with an integrated home button, along with pre-installed battery for wireless operation.

**LEG**

Aluminum Brushed Metal Leg  
Aluminum Black Leg  
Wood Base

**FRAME**

Constructed with cold cured foam material that encases a tubular steel frame, enabling perfect ergonomic design for complete body support.

**SEATING COMFORT**

Back Suspension: 100% premium elastic webbing to provide consistent comfort and support.  
Seat Suspension: Heavy gauge sinuous springs, engineered to provide premium comfort and endurance.  
Cold molded foam seat cushions are ergonomically molded, holding their shape for the entire life of the foam  
Cold molded foam back cushions are ergonomically molded, holding their shape for the entire life of the foam

**FUNCTION**

Power recline with button switch and integrated home button, along with pre-installed battery for wireless operation.

**COVERS**

Fabric  
Leather

Q30 50030

PALLISER®



**31 Chair Power Recliner**  
28 x 33 x 44"  
72 x 84 x 111 cm  
IA: 18" / 46 cm

#### DIMENSIONS

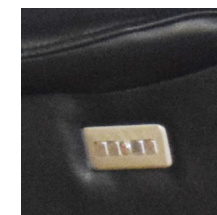
Seat Depth: 20" / 51 cm  
Seat Height: 19" / 47 cm  
Arm Depth: 24" / 62 cm  
Arm Height: 24" / 61 cm  
Reclined Depth: 61" / 156 cm

Dimensions shown as Width x Depth x Height.

Dimensions are correct at the time of printing and are subject to change without notice. Actual measurements for each item may vary from what is shown here. Please allow up to a +/- 1 inch difference. Availability may vary by region.



COLD MOLDED FOAM



POWER BUTTON



FLARED HEADREST



METAL LEG

Note: Power recline controls with an integrated home button, along with pre-installed battery for wireless operation.

**LEG**

Aluminum Brushed Metal Leg  
Aluminum Black Leg  
Wood Base

**FRAME**

Constructed with cold cured foam material that encases a tubular steel frame, enabling perfect ergonomic design for complete body support.

**SEATING COMFORT**

Back Suspension: 100% premium elastic webbing to provide consistent comfort and support.  
Seat Suspension: Heavy gauge sinuous springs, engineered to provide premium comfort and endurance.  
Cold molded foam seat cushions are ergonomically molded, holding their shape for the entire life of the foam  
Cold molded foam back cushions are ergonomically molded, holding their shape for the entire life of the foam

**FUNCTION**

Power recline with button switch and integrated home button, along with pre-installed battery for wireless operation.

**COVERS**

Fabric  
Leather

Q31 50031

PALLISER®



**31 Chair Power Recliner**

30 x 35 x 43"

75 x 88 x 108 cm

IA: 20" / 51 cm

**DIMENSIONS**

Seat Depth: 21" / 53 cm

Seat Height: 19" / 48 cm

Arm Depth: 27" / 69 cm

Arm Height: 24" / 61 cm

Reclined Depth: 62" / 158 cm

Dimensions shown as Width x Depth x Height.

Dimensions are correct at the time of printing and are subject to change without notice. Actual measurements for each item may vary from what is shown here. Please allow up to a +/- 1 inch difference. Availability may vary by region.

Q90 44100

PALLISER®



COLD MOLDED  
FOAM



POWER BUTTON



WELT PIPING



BRUSHED  
ALUMINUM  
PRONG BASE  
OPTION

#### LEG

Aluminum Brushed Metal Leg  
Aluminum Black Leg  
Wood Base

#### FRAME

Constructed with cold cured foam material that encases a tubular steel frame, enabling perfect ergonomic design for complete body support.

#### SEATING COMFORT

Back Suspension: Sinuous springs to provide premium comfort and support.

Seat Suspension: Heavy gauge sinuous springs, engineered to provide premium comfort and endurance.

Cold molded foam seat cushions are ergonomically molded, holding their shape for the entire life of the foam

Cold molded foam back cushions are ergonomically molded, holding their shape for the entire life of the foam

#### FUNCTION

Power seat and back recliner controlled independently for infinite positioning finished in a brushed metal switch with a home button.

#### COVERS

Fabric  
Leather

Measurements displayed here represent the standard for this series. Some pieces may vary. Options and Add-ons may have an upcharge.



Q90 44100

PALLISER®



**42 Zero Gravity Chair**  
32 x 36 x 48"  
82 x 91 x 122 cm  
IA: 21" / 54 cm

#### DIMENSIONS

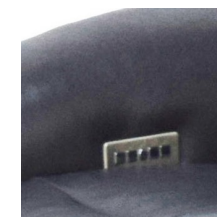
Seat Depth: 21" / 53 cm  
Seat Height: 20" / 52 cm  
Arm Depth: 26" / 67 cm  
Arm Height: 25" / 65 cm  
Reclined Depth: 65" / 166 cm

Dimensions shown as Width x Depth x Height.

Dimensions are correct at the time of printing and are subject to change without notice. Actual measurements for each item may vary from what is shown here. Please allow up to a +/- 1 inch difference. Availability may vary by region.



COLD MOLDED  
FOAM



POWER BUTTON



BLACK  
ALUMINUM  
PRONG BASE  
OPTION



WALNUT WOOD  
PEDESTAL  
OPTION

#### LEG

Aluminum Brushed Metal Leg  
Aluminum Black Leg  
Wood Base

#### FRAME

Constructed with cold cured foam material that encases a tubular steel frame, enabling perfect ergonomic design for complete body support.

#### SEATING COMFORT

Back Suspension: Sinuous springs to provide premium comfort and support.

Seat Suspension: Heavy gauge sinuous springs, engineered to provide premium comfort and endurance.

Cold molded foam seat cushions are ergonomically molded, holding their shape for the entire life of the foam

Cold molded foam back cushions are ergonomically molded, holding their shape for the entire life of the foam

#### FUNCTION

Power seat and back recliner controlled independently for infinite positioning finished in a brushed metal switch with a home button.

#### COVERS

Fabric  
Leather

Q91 44101

PALLISER®



**42 Zero Gravity Chair**  
31 x 38 x 46"  
79 x 96 x 117 cm  
IA: 21" / 54 cm

#### DIMENSIONS

Seat Depth: 21" / 53 cm  
Seat Height: 20" / 51 cm  
Arm Depth: 29" / 74 cm  
Arm Height: 25" / 65 cm  
Reclined Depth: 66" / 168 cm

Dimensions shown as Width x Depth x Height.

Dimensions are correct at the time of printing and are subject to change without notice. Actual measurements for each item may vary from what is shown here. Please allow up to a +/- 1 inch difference. Availability may vary by region.



STANDARD  
PREMIUM FOAM



ADJUSTABLE  
HEADREST  
PILLOW



CHROME LEG



BACK HEATING  
PAD OPTION  
AVAILABLE

**LEG**

Chrome Leg  
Espresso Wood Leg

**FRAME**

All Palliser frames are constructed from engineered wood products, hardwood or softwood; joints are pinned and glued for uniformity and strength.

**SEATING COMFORT**

Tight back cushions with high-quality foam core in polyester wrap  
Full, chaise-style seat cushions with high-resiliency, high density foam core in polyester wrap  
Back Suspension: 100% premium elastic webbing to provide consistent comfort and support.  
Seat Suspension: Heavy gauge sinuous springs, engineered to provide premium comfort and endurance.

**FUNCTION**

Back Heating Pad  
Power recline with button switch

**COVERS**

Leather  
Fabric

ZG4 41088

PALLISER®



42 Zero Gravity Power  
Recliner  
HP Zero Gravity Power  
Recliner w/Heat Pad  
34 x 41 x 45"  
85 x 103 x 114 cm  
IA: 21" / 54 cm

#### DIMENSIONS

Seat Depth: 19" / 50 cm  
Seat Height: 19" / 48 cm  
Arm Depth: 37" / 93 cm  
Arm Height: 26" / 66 cm  
Reclined Depth: 61" / 154 cm

Dimensions shown as Width x Depth x Height.

Dimensions are correct at the time of printing and are subject to change without notice. Actual measurements for each item may vary from what is shown here. Please allow up to a +/- 1 inch difference. Availability may vary by region.



STANDARD  
PREMIUM FOAM



ADJUSTABLE  
HEADREST  
PILLOW



CHROME LEG



POWER RECLINE  
BUTTON

**LEG**

Espresso Wood Leg  
Chrome Leg

**FRAME**

All Palliser frames are constructed from engineered wood products, hardwood or softwood; joints are pinned and glued for uniformity and strength.

**SEATING COMFORT**

Tight back cushions with high-quality foam core in polyester wrap  
Full, chaise-style seat cushions with high-resiliency, high density foam core in polyester wrap  
Back Suspension: 100% premium elastic webbing to provide consistent comfort and support.  
Seat Suspension: Heavy gauge sinuous springs, engineered to provide premium comfort and endurance.

**FUNCTION**

Power recline with button switch

**COVERS**

Leather  
Fabric

ZG5 41089

PALLISER®



**42 Zero Gravity Power**

**Recliner**

33 x 41 x 45"

84 x 104 x 114 cm

IA: 22" / 55 cm

**DIMENSIONS**

Seat Depth: 21" / 54 cm

Seat Height: 19" / 48 cm

Arm Depth: 35" / 89 cm

Arm Height: 26" / 65 cm

Reclined Depth: 61" / 154 cm

Dimensions shown as Width x Depth x Height.

Dimensions are correct at the time of printing and are subject to change without notice. Actual measurements for each item may vary from what is shown here. Please allow up to a +/- 1 inch difference. Availability may vary by region.



STANDARD  
PREMIUM FOAM



BACK HEATING  
PAD OPTION  
AVAILABLE



ADJUSTABLE  
HEADREST  
PILLOW



ESPRESSO WOOD  
LEG

**LEG**

Chrome Leg  
Espresso Wood Leg

**FRAME**

All Palliser frames are constructed from engineered wood products, hardwood or softwood; joints are pinned and glued for uniformity and strength.

**SEATING COMFORT**

Tight back cushions with high-quality foam core in polyester wrap  
Full, chaise-style seat cushions with high-resiliency, high density foam core in polyester wrap  
Back Suspension: 100% premium elastic webbing to provide consistent comfort and support.  
Seat Suspension: Heavy gauge sinuous springs, engineered to provide premium comfort and endurance.

**FUNCTION**

Back Heating Pad  
Power recline with button switch

**COVERS**

Leather  
Fabric



ZG6 41090

PALLISER®



42 Zero Gravity Power  
Recliner  
HP Zero Gravity Power  
Recliner w/Heat Pad  
34 x 40 x 46"  
86 x 102 x 116 cm  
IA: 21" / 53 cm

#### DIMENSIONS

Seat Depth: 21" / 54 cm  
Seat Height: 19" / 48 cm  
Arm Depth: 35" / 90 cm  
Arm Height: 25" / 62 cm  
Reclined Depth: 63" / 160 cm

Dimensions shown as Width x Depth x Height.

Dimensions are correct at the time of printing and are subject to change without notice. Actual measurements for each item may vary from what is shown here. Please allow up to a +/- 1 inch difference. Availability may vary by region.